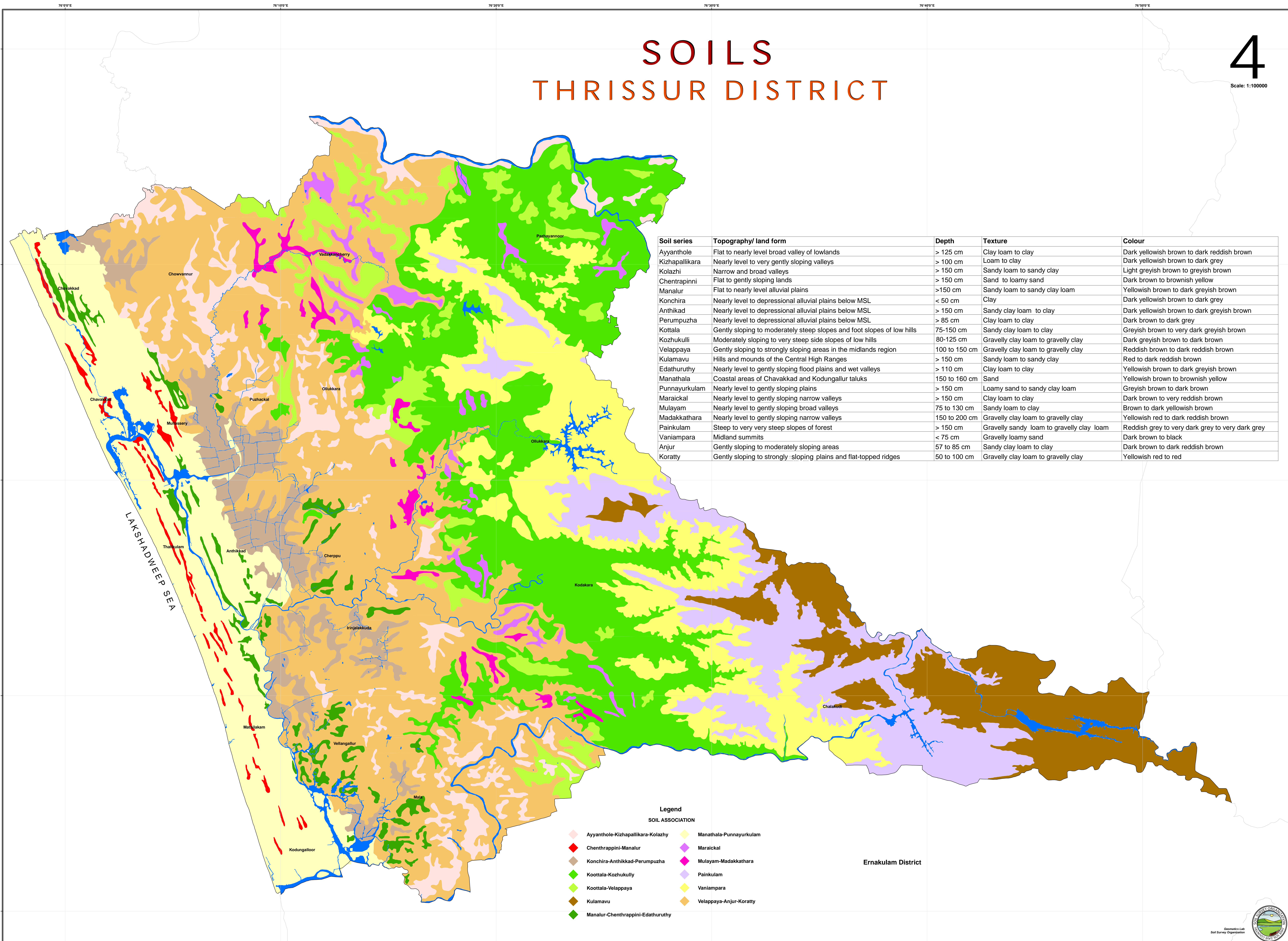


SOILS THRISSUR DISTRICT

4

Scale: 1:100000



Soil series	Topography/ land form	Depth	Texture	Colour
Ayyanthole	Flat to nearly level broad valley of lowlands	> 125 cm	Clay loam to clay	Dark yellowish brown to dark reddish brown
Kizhappallickara	Nearly level to very gently sloping valleys	> 100 cm	Loam to clay	Dark yellowish brown to dark grey
Kolazhi	Narrow and broad valleys	> 150 cm	Sandy loam to sandy clay	Light greyish brown to greyish brown
Chentrapinni	Flat to gently sloping lands	> 150 cm	Sand to loamy sand	Dark brown to brownish yellow
Manalur	Flat to nearly level alluvial plains	>150 cm	Sandy loam to sandy clay loam	Yellowish brown to dark greyish brown
Konchira	Nearly level to depressional alluvial plains below MSL	< 50 cm	Clay	Dark yellowish brown to dark grey
Anthikad	Nearly level to depressional alluvial plains below MSL	> 150 cm	Sandy clay loam to clay	Dark yellowish brown to dark greyish brown
Perumpuzha	Nearly level to depressional alluvial plains below MSL	> 85 cm	Clay loam to clay	Dark brown to dark grey
Kottala	Gently sloping to moderately steep slopes and foot slopes of low hills	75-150 cm	Sandy clay loam to clay	Greyish brown to very dark greyish brown
Kozhukully	Moderately sloping to very steep side slopes of low hills	80-125 cm	Gravelly clay loam to gravelly clay	Dark greyish brown to dark brown
Velappaya	Gently sloping to strongly sloping areas in the midlands region	100 to 150 cm	Gravelly clay loam to gravelly clay	Reddish brown to dark reddish brown
Kulamavu	Hills and mounds of the Central High Ranges	> 150 cm	Sandy loam to sandy clay	Red to dark reddish brown
Edathuruthy	Nearly level to gently sloping flood plains and wet valleys	> 110 cm	Clay loam to clay	Yellowish brown to dark greyish brown
Manathala	Coastal areas of Chavakkad and Kodungallur taluks	150 to 160 cm	Sand	Yellowish brown to brownish yellow
Punnayurkulam	Nearly level to gently sloping plains	> 150 cm	Loamy sand to sandy clay loam	Greyish brown to dark brown
Maraickal	Nearly level to gently sloping narrow valleys	> 150 cm	Clay loam to clay	Dark brown to very reddish brown
Mulayam	Nearly level to gently sloping broad valleys	75 to 130 cm	Sandy loam to clay	Brown to dark yellowish brown
Madakkathara	Nearly level to gently sloping narrow valleys	150 to 200 cm	Gravelly clay loam to gravelly clay	Yellowish red to dark reddish brown
Painkulam	Steep to very very steep slopes of forest	> 150 cm	Gravelly sandy loam to gravelly clay loam	Reddish grey to very dark grey to very dark grey
Vaniampara	Midland summits	< 75 cm	Gravelly loamy sand	Dark brown to black
Anjur	Gently sloping to moderately sloping areas	57 to 85 cm	Sandy clay loam to clay	Dark brown to dark reddish brown
Koratty	Gently sloping to strongly sloping plains and flat-topped ridges	50 to 100 cm	Gravelly clay loam to gravelly clay	Yellowish red to red

- Legend**
SOIL ASSOCIATION
- ◆ Ayyanthole-Kizhappallickara-Kolazhi
 - ◆ Chentrapinni-Manalur
 - ◆ Konchira-Anthikad-Perumpuzha
 - ◆ Kottala-Kozhukully
 - ◆ Kottala-Velappaya
 - ◆ Kulamavu
 - ◆ Manalur-Chentrapinni-Edathuruthy
 - ◆ Manathala-Punnayurkulam
 - ◆ Maraickal
 - ◆ Mulayam-Madakkathara
 - ◆ Painkulam
 - ◆ Vaniampara
 - ◆ Velappaya-Anjur-Koratty

