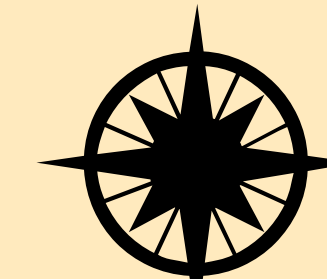


SOILS

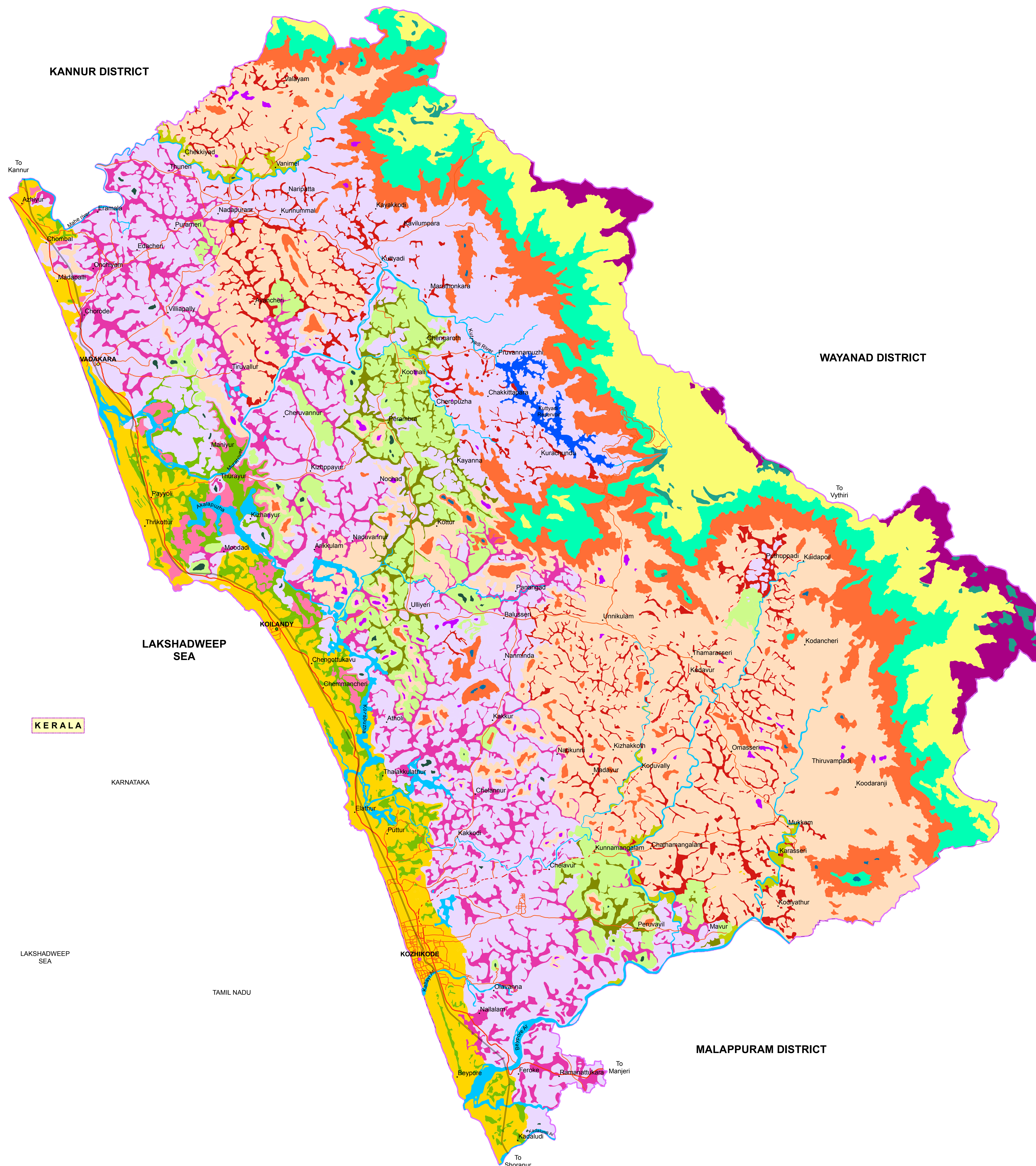
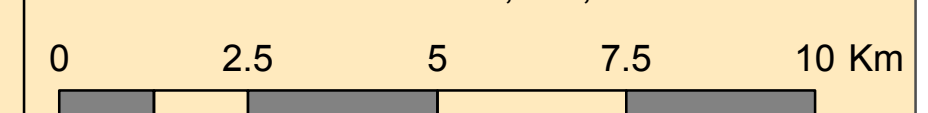
KOZHIKODE DISTRICT

AREA - 2,34,400 Ha



SCALE

R.F - 1 : 1,000,00



LEGEND

- NH17
- Water body
- Soil Association
- Nannimda - Elathur - Sivapuram
- Kunnamangalm - Kalarikunnu
- Thiruvampadi-Tanneramala
- Kakkayam-Thanneramala
- NH212
- Reservoir
- Thikkodi - Elathur - Beypore
- Ulliyeri - Kakkodi - Chaliyar
- Kalarikunnu - Tanneramala
- Charangad - Kakkayam
- Main Road
- District Boundary
- Kakkodi - Mudadi - Chaliyar
- Nadapuram-Ulliyeri
- Adivaram - Koorachundu
- Railway Line
- Purameri - Kizhakkumuri - Chelapram
- Vayad - Kunduthode
- Memmala - Thiruvampadi
- Pakranthalam - Adivaram
- Sankarapuzha - Charangad

Soil series	Topography/Land form	Depth	Texture	Colour	Soil series	Topography/Land form	Depth	Texture	Colour
Thikkodi	Very gently to gently sloping lands along the seacoast	> 150 cm	Sand to loamy sand	Dark brown to yellowish brown	Kunnamangalam	On rolling to undulating lands	> 100 cm	Gravelly clay loam to gravelly clay	Reddish brown to yellowish red
Elathur	Gently sloping lands in the coastal belt	> 150 cm	Sandy loam to sandy clay loam	Yellowish red to reddish brown	Thanneramala	Gently sloping to strongly sloping upper slopes and summit sites of denudational hills	35 to 75 cm	Sandy clay to clay	Dark reddish brown to yellowish red
Beypore	Very gently to gently sloping low land	> 150 cm	Loam to sandy clay loam	Red	Nadapuram	Narrow valleys between denudational hills	> 150 cm	Sand to sandy clay loam	Strong brown to very pale brown
Kakkodi	Very gently sloping valleys adjacent to the rivers and rivulets	> 150 cm	Sandy clay loam to clay	Yellow to dark yellowish brown	Memmala	Steep to very steep side slopes of denudational hills in mid land and uplands	> 150 cm	Sandy clay to clay	Red to dark reddish brown
Mudadi	Valley of low land and midlands	> 150 cm	Gravelly sandy clay loam to gravelly clay	Dark greyish brown to yellowish brown	Thiruvampadi	Moderately steep to steep side slopes of hills	60 to 100 cm	Gravelly clay loam to gravelly clay	Dark reddish brown to brown
Chaliyar	Very gently sloping to moderately sloping natural levees along the river course	> 150 cm	Clay loam to clay	Very pale brown to dark yellowish brown	Koorachundu	Moderately sloping to steep crust and foot slopes of steep hills on mid upland and upland region	50 to 75 cm	Gravelly clay loam to gravelly sandy clay loam	Yellowish red to dark reddish brown
Purameri	Very gently sloping (1-3%) valleys in the low lands	> 150 cm	Sandy clay loam to gravelly sandy clay loam	Light grey to grey	Adivaram	Moderately steep to very steep side slopes of hills on mid uplands and uplands	100 to 150 cm	Gravelly clay loam to gravelly clay	Dark brown to yellowish red
Kizhakkumuri	Very gently sloping valleys along the seacoast	> 150 cm	Sandy loam to sandy clay loam	Pale brown to brown	Vayad	Gently to moderately sloping lands in denudational hills	> 150 cm	Gravelly sandy clay loam to gravelly clay	Dusky red to yellowish red
Chelapram	Nearly level to depression lands	> 150 cm	Clay loam to clay	Brown to dark greyish brown	Kunduthode	Very gently sloping to gently sloping sides of streams on denudational hills	> 150 cm	Clay loam to clay	Reddish yellow to dark reddish brown
Nannimda	On gently to moderately sloping side slopes of low mounds	< 120 cm	Gravelly clay loam to gravelly clay	Yellowish red to reddish brown	Pakranthalam	Steep to very steep denudation hills	> 150 cm	Gravelly clay loam to gravelly clay	Dark reddish brown to brown
Sivapuram	On gently sloping to moderately sloping lowlands	> 150 cm	Sandy clay loam to clay	Red	Kakkayam	Steep to very steep slopes of denudational hills	25 to 50 cm	Gravelly sandy loam to gravelly sandy clay loam	Dusky red to dark grey to black
Ulliyeri	Very gently sloping valleys	> 150 cm	Sandy loam to sandy clay loam	Yellowish brown to light yellowish brown	Charangad	Very steep slopes of denudational hills with slope gradient	> 150 cm	Clay	Strong brown to black
Kalarikunnu	Flat, midland hilltops having indurated laterite outcrops	40 to 75 cm	Gravelly clay	Yellowish red to reddish brown	Sankarapuzha	Very steep to very very steep side slopes of denudational hill	> 150 cm	Clay loam to sandy clay	Reddish yellow to black